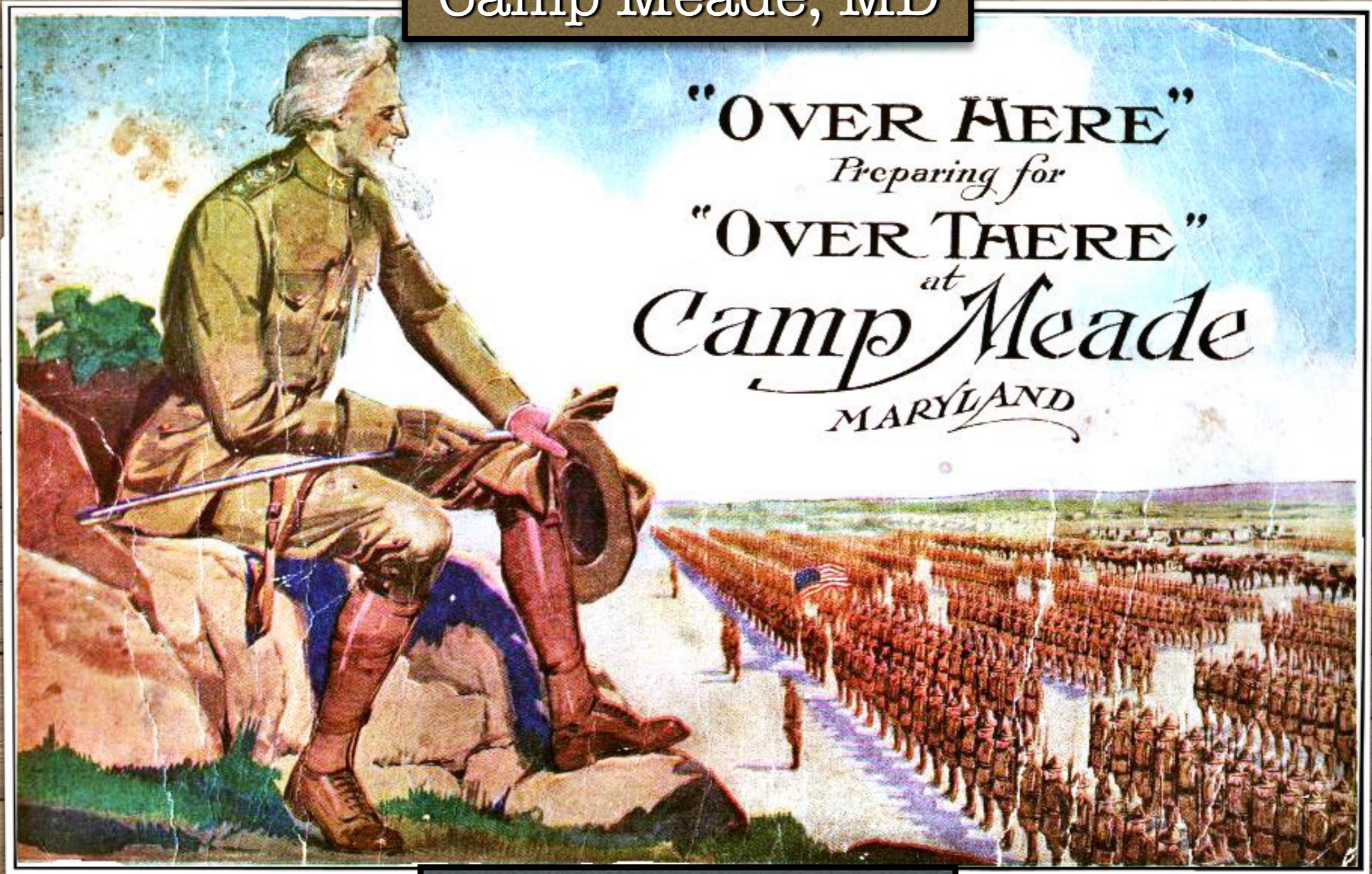




Camp Meade, MD



Fort Meade Museum- Digital Restoration by Dr. Erik Villard



Meade, Camp, Md.

History: Named in honor of Maj. Gen. George G. Meade, U. S. A., a veteran of the War with Mexico and Civil War, who received the thanks of Congress for services at Gettysburg, 1863. Established, July 18, 1917, to serve as training camp for 79th Div. (N. A.), which occupied the cantonment, Aug. 1917–July 1918. Construction started July 2, 1917, and continued through 1918.

The first inducted men reported Sept. 16–30, 1917; the last, Dec. 1–15, 1918. Approximate numbers received from States and other sources: Conn., 1,200; Del. 917; D. C., 8,808; Ga., 500; Pa., 44,153; Mass., 5,267; Md., 24,604; N. C., 1,720; N. J., 2,006; N. Y., 4,788; Ohio, 1,329; R. I., 1,593; Tenn., 2,632; Va., 4,000; W. Va., 5,945; other States, 320; other camps, 18,157.

Camp expanded Aug. 1918 to include Franklin Cantonment (named after Benjamin Franklin), established same month. Designated as demobilization center, Dec. 3, 1918. Retained as permanent reservation and renamed Fort Leonard Wood, 1928. Known as Fort George G. Meade since 1929.

Description: Reservation located 18 miles southwest of Baltimore, Anne Arundel County. *Facilities—Camp Base Hospital:* Organization began Aug. 1917; construction started Sept. 1917. First patients admitted Nov. 10, 1917. See p. 265. *Officers' Training Schools:* Third Series—In operation, Jan. 5–Apr. 19, 1918. See pp. 81, 82. Fourth Series—In operation, May–June 1918. See pp. 83, 84. *Franklin Cantonment:* Subsidiary Signal Corps training center, accommodating about 11,000 men, located 1 mile from main camp. Included about 600 buildings, ready for occupancy, Nov. 1, 1918. See pp. 479, 490, 494. *Ordnance Reserve Officers' School:* See Frankford. *Demobilization Center:* Number processed—96,075. *Other Facilities:* See p. 678.

Entire cantonment comprised more than 2,000 buildings. Troop capacity (including Franklin Cantonment)—53,830. Construction costs to June 30, 1919—About \$18,000,000. Area—Cantonment site proper, 2,900 acres; entire reservation—9,349 acres.

Command Status: Commanding officer reported direct to War Department; also exercised jurisdiction of general courts-martial till Sept. 24, 1919.

Camp Commanders: 1917—Aug. 25, Brig. Gen. Joseph E. Kuhn; Aug. 29, Maj. Gen. Joseph E. Kuhn; Nov. 26, Brig. Gen.



Recruits depart for Camp Meade, MD



The 79th Division
“Cross of Lorraine”



William J. Nicholson (ad interim).

1918—Feb. 18, Maj. Gen. Joseph E. Kuhn; May 22, Brig. Gen. William J. Nicholson (ad interim); June 7, Maj. Gen. Joseph E. Kuhn; June 26, Brig. Gen. William J. Nicholson (ad interim); July 1, Brig. Gen. Joseph A. Gaston; Aug. 15, Maj. Gen. Jesse McI. Carter.

1919—Feb. 8, Brig. Gen. S. J. Bayard Schindel; Mar. 15, Col. Charles R. Noyes; Mar. 24, Maj. Gen. Beaumont B. Buck; May 14, Maj. Gen. Grote Hutcheson through June 20.

Average Strength 1917-18

Month	Officers	Enlisted men			Aggregate
		White	Colored	Total	
<i>1917</i>					
September.....	961	4,717		4,717	5,704
October.....	1,062	16,726		16,726	17,714
November.....	1,967	28,077	2,154	31,151	33,066
December.....	3,161	89,066	3,336	92,402	95,673
<i>1918</i>					
January.....	1,777	29,136	6,069	35,201	36,984
February.....	1,758	29,825	5,651	35,476	37,278
March.....	1,814	29,204	7,944	37,148	38,954
April.....	1,555	26,421	4,719	31,140	32,695
May.....	1,347	28,072	7,669	35,741	37,088
June.....	1,498	89,753	8,971	98,724	100,217
July.....	843	27,761	10,293	38,054	38,897
August.....	837	31,421	5,189	36,610	37,447
September.....	1,315	28,077	5,189	33,246	34,561
October.....	2,055	37,812	7,921	45,733	47,788
November.....	1,555	37,461	3,333	41,090	42,645
December.....	1,549	33,264	3,633	36,901	38,450

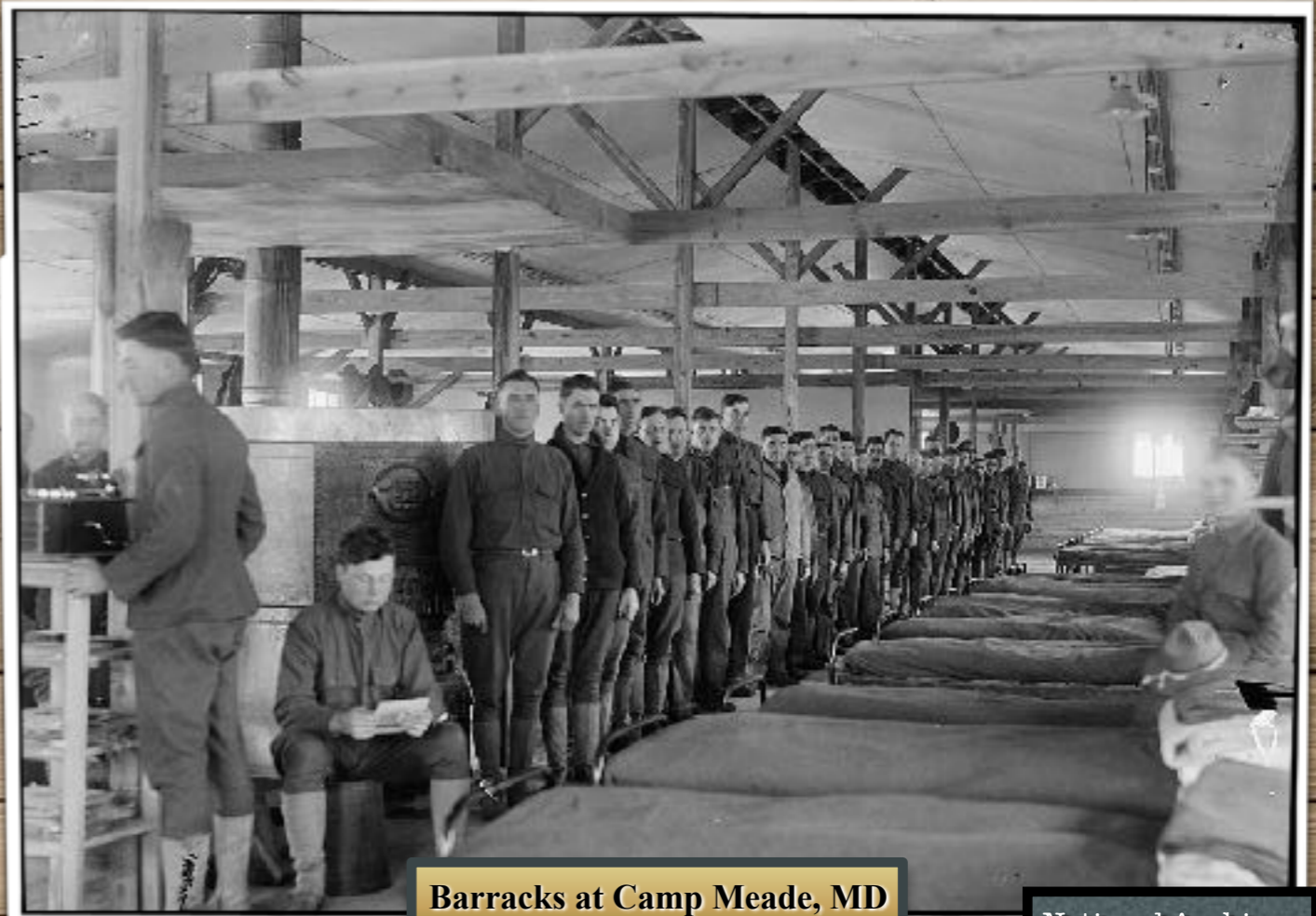
Troops

STATION COMPLEMENT

Aux. Rmt. Dep. 304; Bkrs. & Cks. Sch.; Base Hosp.; Cp. Hq.; 154th Dep. Brig.; Devlpt. Bn.; Engr. Dep. Det. 408; F. Trk. & H. Co. 304; M. Sh. Trk. U. 337; Med. Sup. Dep.; M. Trk. Cos. 22, 338; Ord. Dep. Co. 101; Provost Gd. Co.; Res. Labor Bn. 417; Sig. Sup. Det.; Util. Det., Wag. Co. 100.

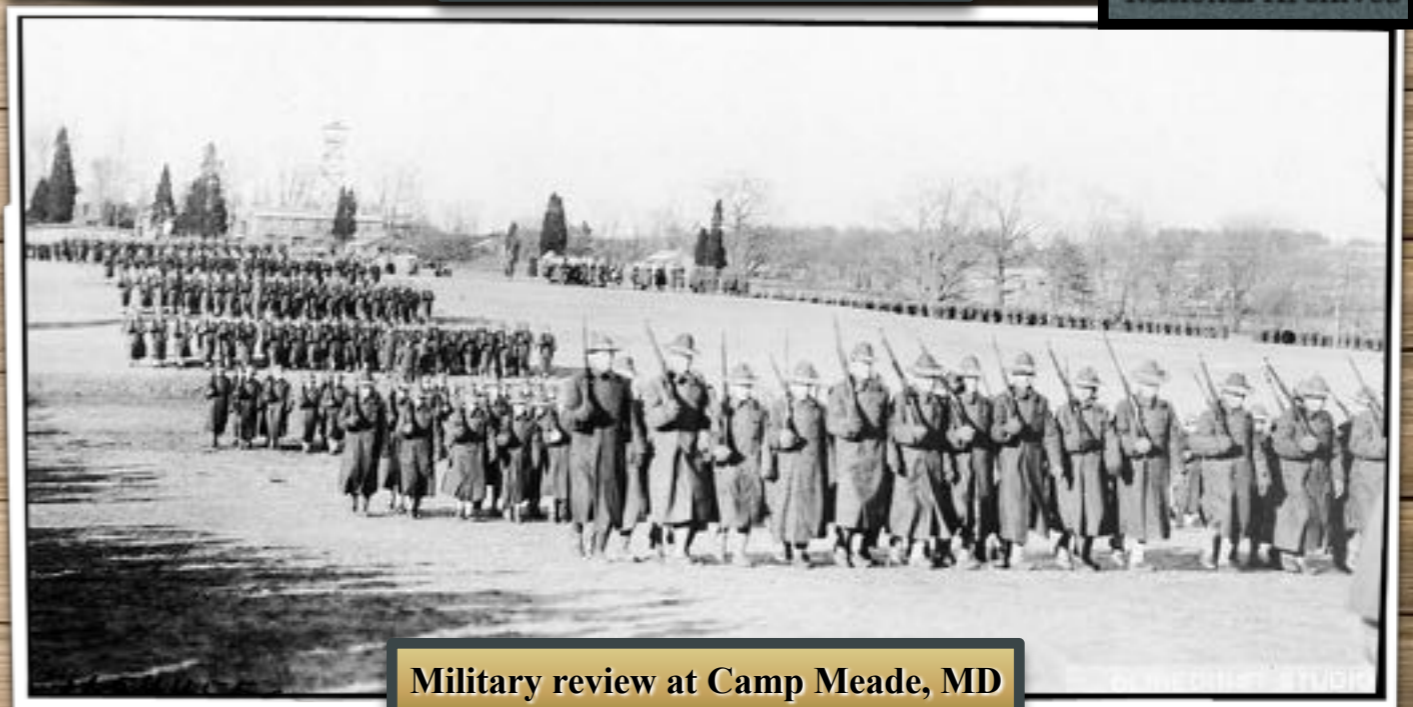
DIVISIONAL UNITS

1st Division: Div. (less 1st Sn. Tn.), garrison duty. *8th Division:* 62d Inf., mobilizing for overseas; 12th Inf., garrison duty. *11th Division:* Div. (less 24th F. A. Brig.), mobilizing for overseas; Div. (less 17th Inf., 63d Inf., 24th F. A. Brig.), demobilizing; 17th Inf., 63d Inf., garrison duty. *17th Division:* 5th Inf., garrison duty. *29th Division:* Hq. 58th Inf. Brig., 115th Inf., 110th F. A., 110th M. G. Bn., 104th Sup. Tn., 104th Sn. Tn., demobiliz-



Barracks at Camp Meade, MD

National Archives



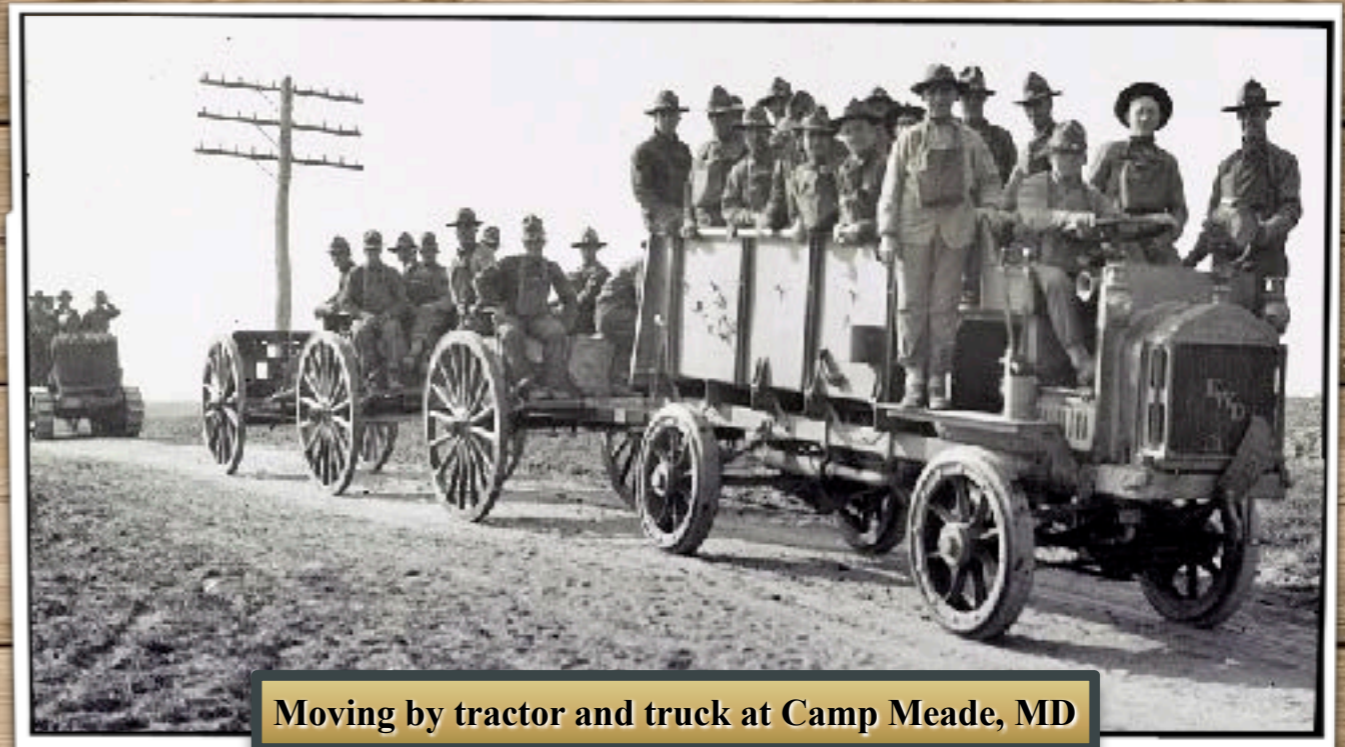
Military review at Camp Meade, MD



ing. *42d Division*: 117th T. M. Btry., 117th Tn. Hq. and M. P., demobilizing. *79th Division*: Div., mobilizing for overseas; 313th Inf., demobilizing. *92d Division*: 368th Inf., 351st F. A., mobilizing for overseas; DHQ., 184th Inf. Brig., Hq. 167th F. A. Brig., 351st F. A., 325th F. Sig. Bn., Hq. Tr., demobilizing.

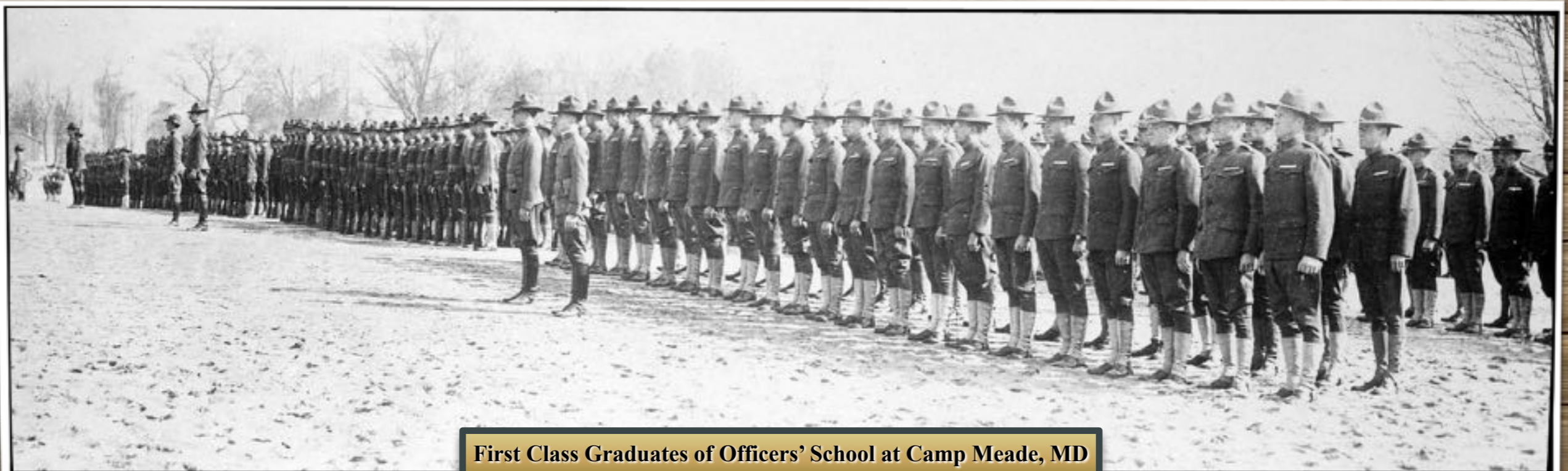
NONDIVISIONAL UNITS

Air Service: 480th Aer. Sq. *Field Artillery*: 22d F. A. Brig. *Engineers*: 23d, 27th, 28th, 65th Regts.; 45th, 505th, 506th, 521st, 522d, 538th, 545th Bns.; 401st Engr. Pon. Park; 467th Engr. Pon. Tn. *Infantry*: 808th Pion. *Medical Department*: Base Hosps. 2, 42, 69, 114; Evac. Hosps. 16, 38. *Quartermaster Corps*: Bkry. Cos. 12, 13, 301, 355, 392, 398, 411; Serv. Bn. 333, *Signal Corps*: 13th Sig. C. Dep. Bn.; 22d, 223d, 224th F. Sig. Bns.; 421st, 422d, 424th, 426th, 427th, 428th, 429th Tg. Bns.; 1st, 2d, 3d, 4th, 5th, 6th Tng. Bns. *Tank Corps*: 301st, 302d (II), 303d (II) Tk. Centers; 304th, 305th, 306th, 307th Tk. Brigs.; 301st, 302d (I), 303d, 304th, 306th, 326th (I), 327th (I), 328th, 329th, 330th, 331st, 332d, 335th, 336th, 337th, 344th, 345th Tk. Bns.; Hv. Tk. Serv. Co. D 2d Bn. 65th Engrs. *Transportation Corps*: 72d, 106th, 840th, 854th, 861st, 862d Cos. *U. S. Guards*: 14th Bn.



Moving by tractor and truck at Camp Meade, MD

National Archives



First Class Graduates of Officers' School at Camp Meade, MD



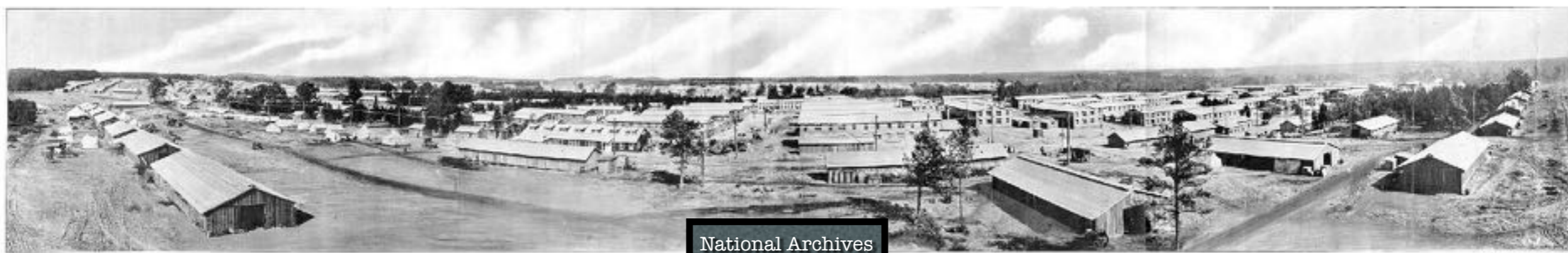
Annotated map of Camp Meade, MD, on Google Earth



Library of Congress



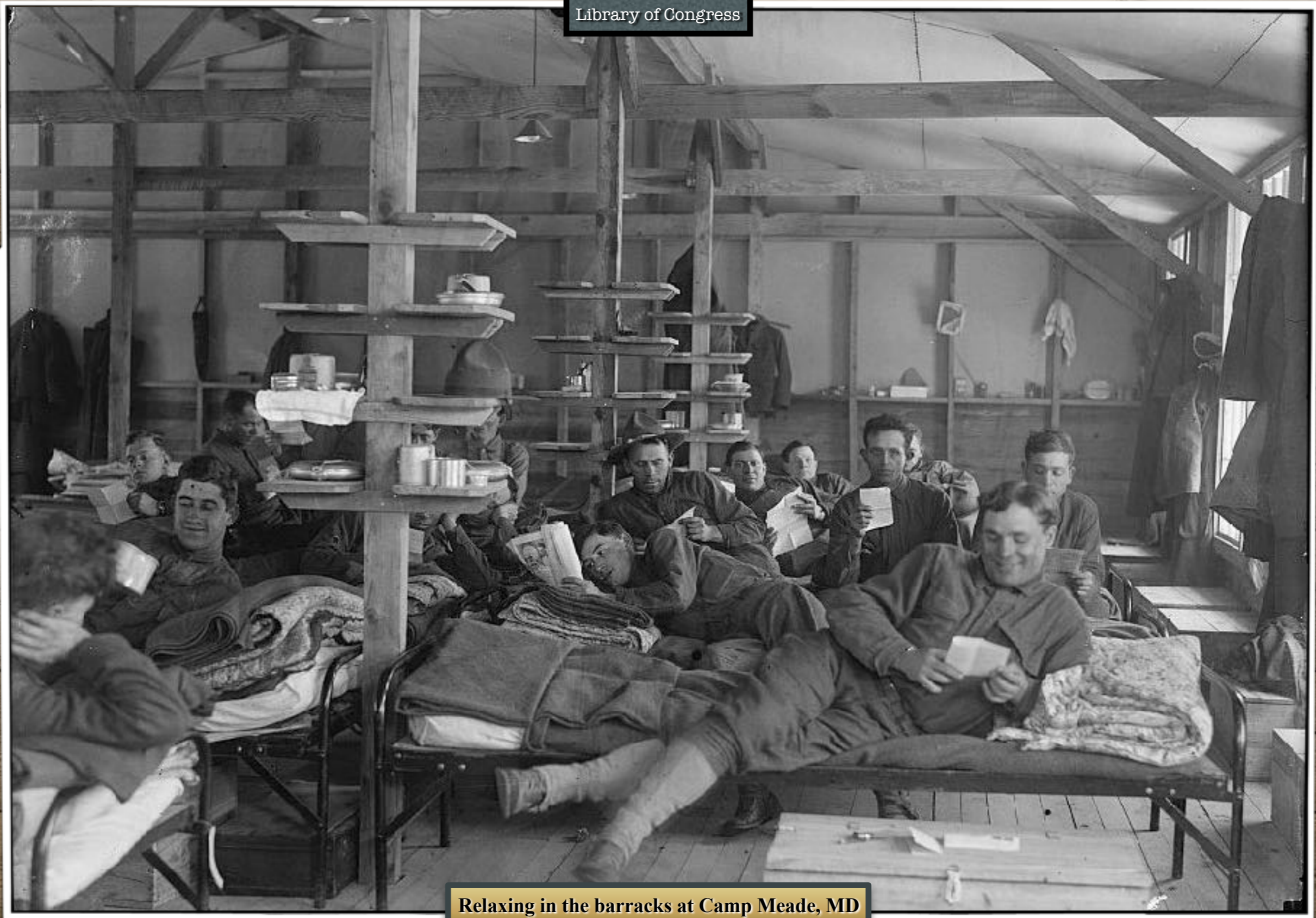
Recruits preparing to depart by train for Camp Meade, MD



National Archives



Library of Congress



Relaxing in the barracks at Camp Meade, MD



National Archives



Liberty Loan fund clock at Camp Meade, MD



National Archives



Trench warfare training at Camp Meade, MD



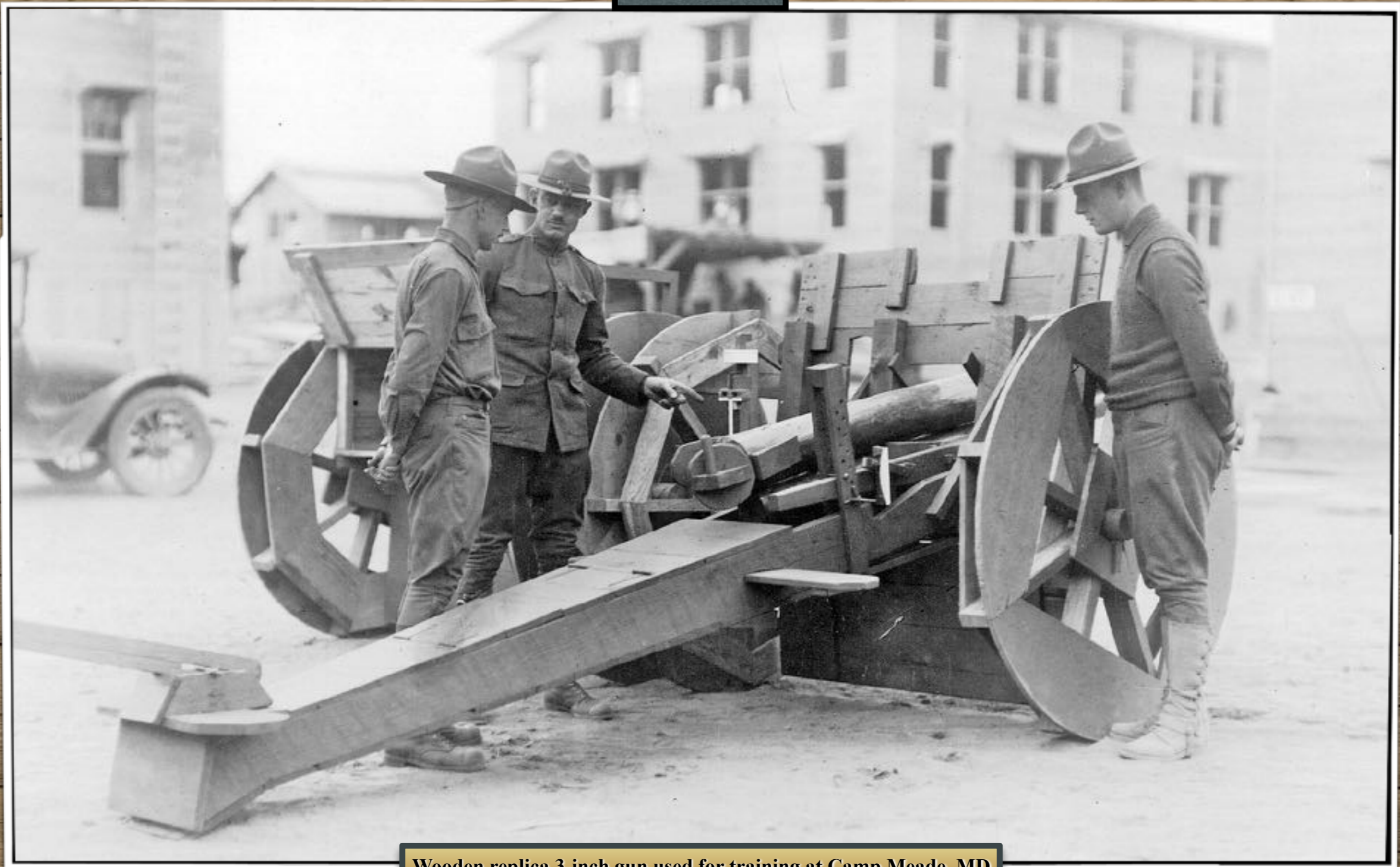
National Archives



Bayonet training at Camp Meade, MD



National Archives



Wooden replica 3-inch gun used for training at Camp Meade, MD



National Archives



Machine-gun training at Camp Meade, MD



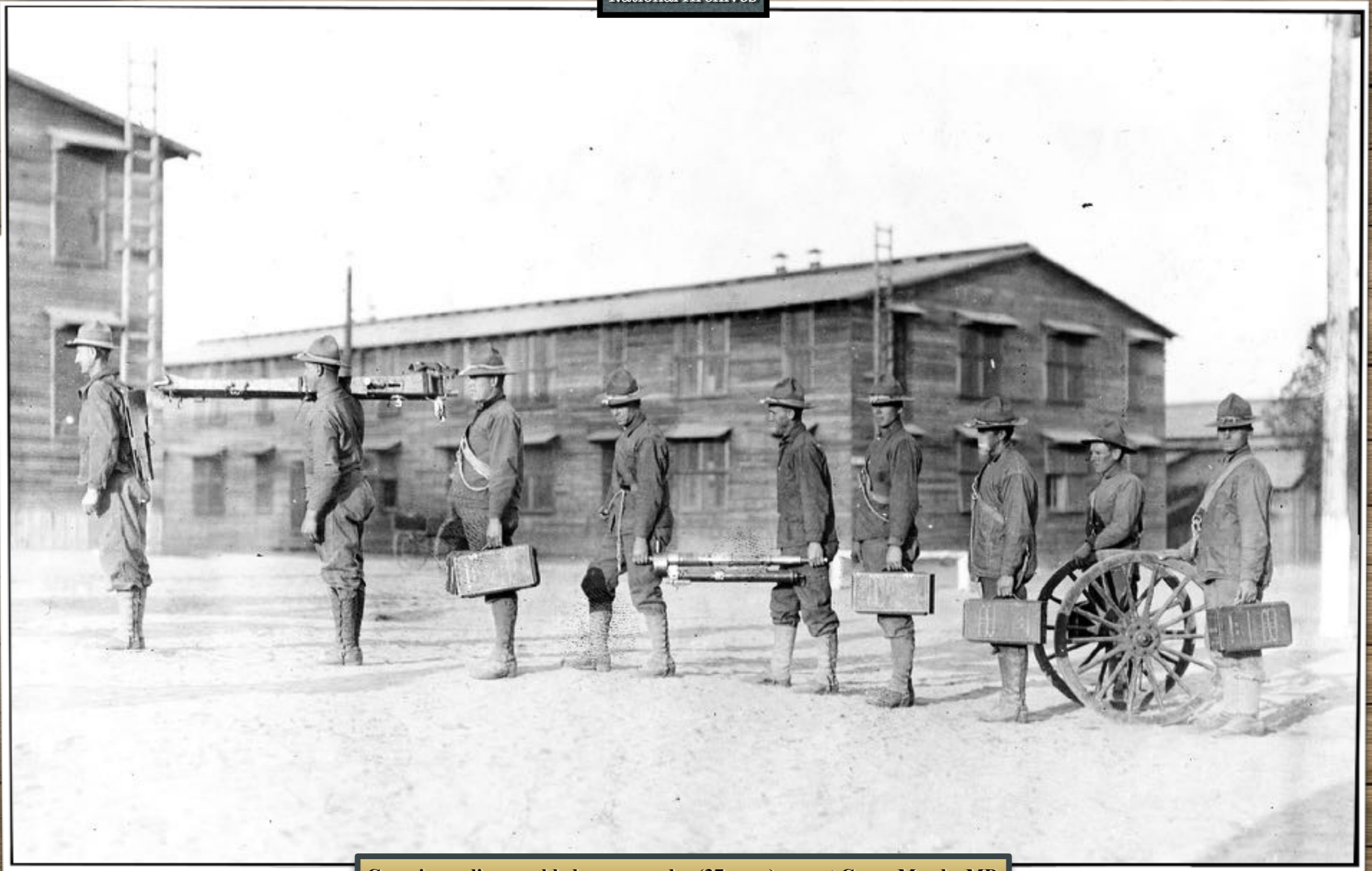
National Archives



French soldiers demonstrate how to use a Chauchat light machine gun at Camp Meade, MD



National Archives



Carrying a disassembled one-pounder (37-mm.) gun at Camp Meade, MD



National Archives



Visitor's Day at Camp Meade, MD



Library of Congress



Delivering bread to Camp Meade, MD



Library of Congress



Library at Camp Meade, MD



Library of Congress



Getting the mail at Camp Meade, MD



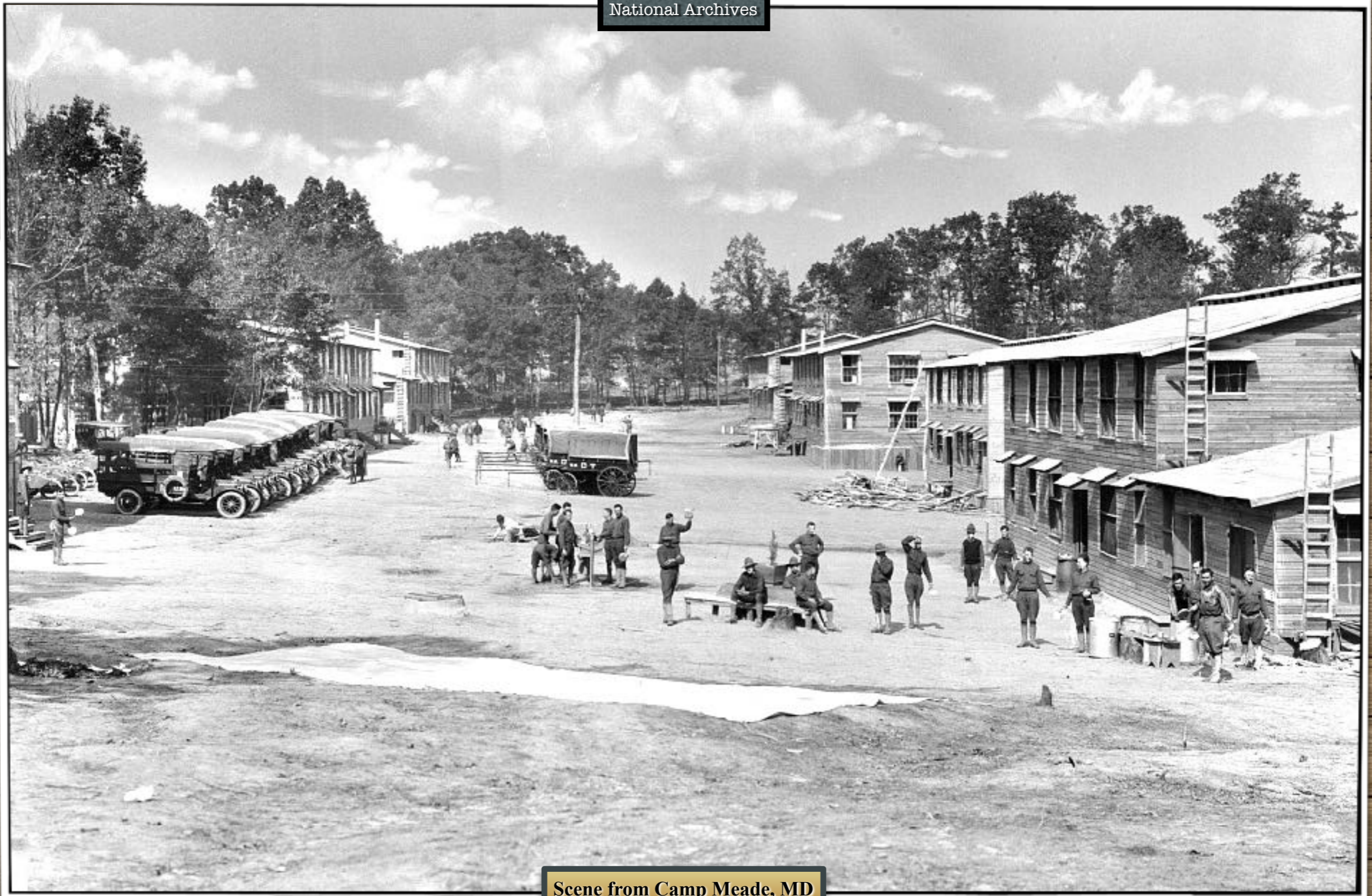
Library of Congress



Maj. Gen. Joseph E. Kuhn (CO 79th Division) and his staff at Camp Meade, MD



National Archives



Scene from Camp Meade, MD